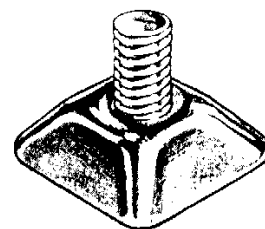


THE TUFNUT WORKS

(800) 227-0949 WATS
(505) 424-1954 NM
(505) 424-1956 FAX
email: tufnut@tufnut.com

Tufnut security nuts are made of 1008 case-hardened steel, and have been designed with flat, 41 degree slopes to make hand tools unable to grasp them. As illustrated below, they can be installed with regular tools, allowing you complete freedom to adjust the tightness of your fastening. The Tufnut is also reuseable, which means it does not need to be replaced each time you do maintenance.

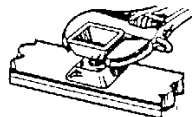


Here's how they work . . .

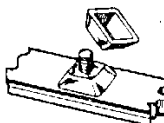
Using a standard carriage bolt, or our special truss-headed Tufbolt, you fasten your property to its' support, installing Tufnut #1 finger-tight (A).



Tufnut #2 is installed as in (B), so it's a half turn away from #1. Tufnut #1 is tightened or loosened by inserting an open-end or adjustable wrench between the two nuts, then turning both nuts.



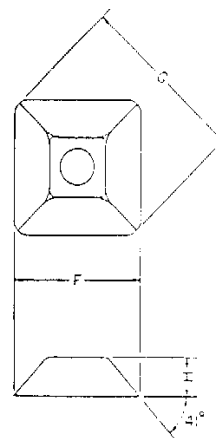
When tight, remove Tufnut #2, leaving your property secured (C).



Specifications . . .

The Tufnut is available in USS and metric sizes. Our largest 1/2" and M12 nuts have a hexagonal base, while all smaller sizes have a square base. The diagram below right illustrates the smaller nuts, which all have the same exterior dimensions - only their thread sizes are different. All nuts are plated .0002"-.0005" with chloride zinc and yellow chromate, and case-hardened .003"-.008" to RC55-60.

Size	Width across flats (F)	Diagonal between corners (G)	Height (H)
10-24 and M5	1.05"	1.28"	.23"
1/4-20 and M6	1.05"	1.28"	.23"
5/16-18 and M8	1.05"	1.28"	.23"
3/8-16 and M10	1.05"	1.28"	.23"
1/2-13 and M12	1.25"	1.37"	.30"



The Tufnut Works offers a variety of theft-resistant hardware to complete your installation. We also offer low-cost security systems which use the Tufnut to protect your office equipment from theft. Please call us for whatever help or advice you need.